



INSTRUCTION SHEET 07298

Part #: 9605 / 9606
Description: TL Brake Kit Installation
Date: 12/08/2021

Instructions for Installation of the 9605 TL20W Brake Kit or 9606 TLB Brake Kit

1. Prepare the machine so there is easy and safe access to the work area. Remove the ignition key and lower the rear support leg. Maintain all safety related work procedures. Always wear eye and hand protection.
2. Lift the rear tires off of the ground and support with jack stands capable of supporting the weight of the truck loader.
3. Remove the wheels from the truck loader. See Figure 1. Set the wheels aside and retain the mounting hardware as it will be used to reinstall the wheels.

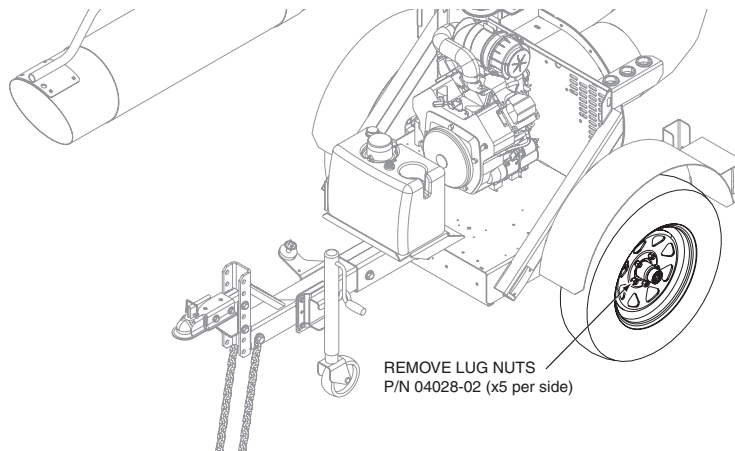


Figure 1. Wheel Removal

4. Remove the hub assembly from the trailer axle. Retain the mounting hardware, cap and bearings as they will be used when installing the new hub. See Figure 2

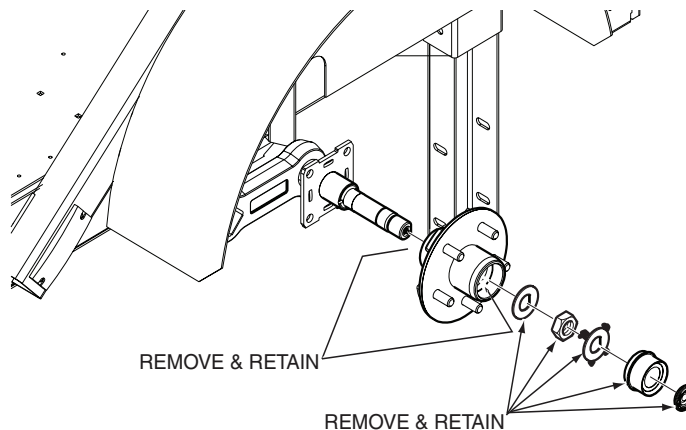


Figure 2. Hub Removal

5. Install the brake assembly to the axle and secure using four (4) 7/16-20 UNF nuts. See Figure 3.

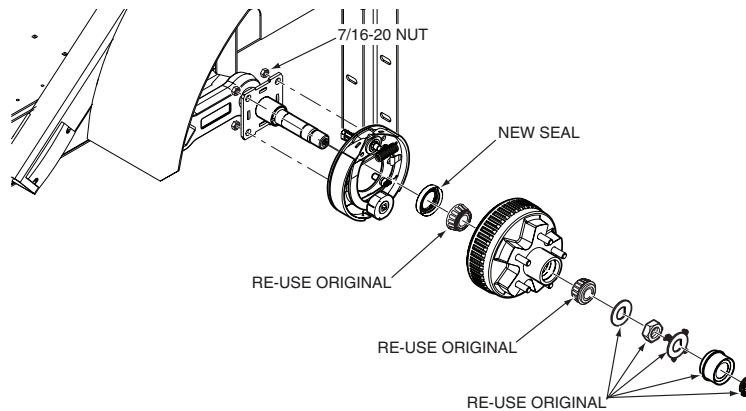


Figure 3. Brake Assembly and Brake Drum Installation

6. Install the bearings (removed from the original hub) and new seal into the hub.
7. Install the hub onto the axle and secure with the hardware removed in step 4. Per Dexter Axles instructions included with the brake hubs, tighten the nut and secure as follows.
- A. Finger tighten the nut until just snug, align the retainer to the machined flat on the spindle and press the retainer onto the nut. The retainer should snap into place. Once in place, the retainer / nut assembly should be free to move slightly.
 - B. If the nut is too tight, remove the retainer and back the nut off approximately one twelfth of a turn and reinstall the retainer. The retainer / nut assembly should now be free to move slightly.
8. Install the grease cap onto the hub.
9. Place a grease gun onto the grease fitting located at the end of the spindle.

-NOTE-

Reference the Dexter Axle Recommended Wheel Bearing Lubrication Specifications included with the hub kit for grease type.

10. Pump grease into the fitting until grease begins to flow back out of the cap around the grease gun nozzle. Rotate the hub while adding grease.
11. Install the rubber plug to the end of the grease cap.
12. Repeat step 4 thru 11 on the opposite side.

-NOTE-

Reference The Engager Break-Away System instruction sheet included with this kit when installing the break away kit.

13. As indicated in The Engager instruction sheet, mount the Break-Away Switch close enough on the trailer so the cable can be attached to the tow vehicle. Secure using one (1) 1/4 x 1.12" self drilling screw.
14. Mount the battery assembly on the trailer and secure with three (3) 1/4 x 1.12" self drilling screws. See Figure 5 or Figure 6 for battery location for each model.

- 15. Layout the wire harness and connect the three wires (blue, white, black) to the trailer connector as shown in Figure 4.

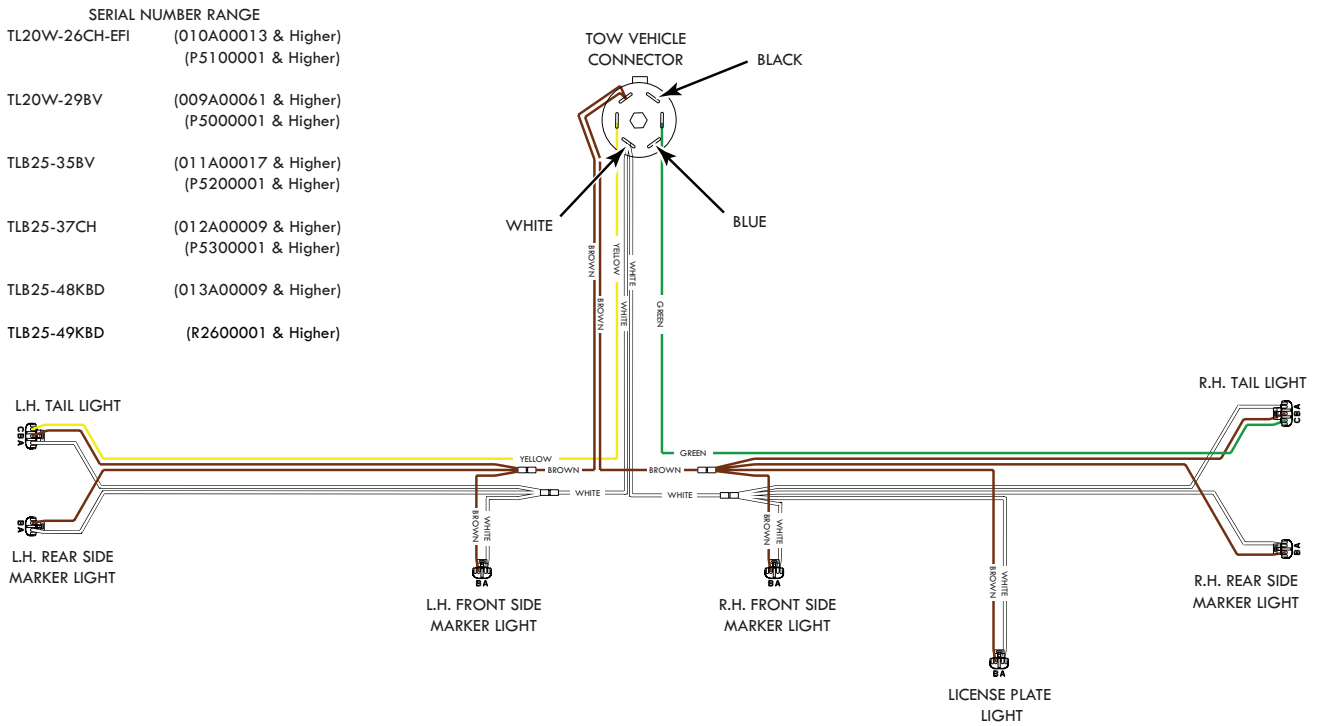


Figure 4. TL Brake Kit Wire Harness Connection

- 16. Route the wire harness through the trailer and connect to the Break-Away Switch, Break-Away System Battery and Brake Assemblies as shown in Figure 5 or Figure 6.
- 17. Once the wire harness is connected to all the components, use the included wire ties to secure the wire harness to the trailer.
- 18. Install the serial number decal on the trailer as shown in Figure 5 or Figure 6.

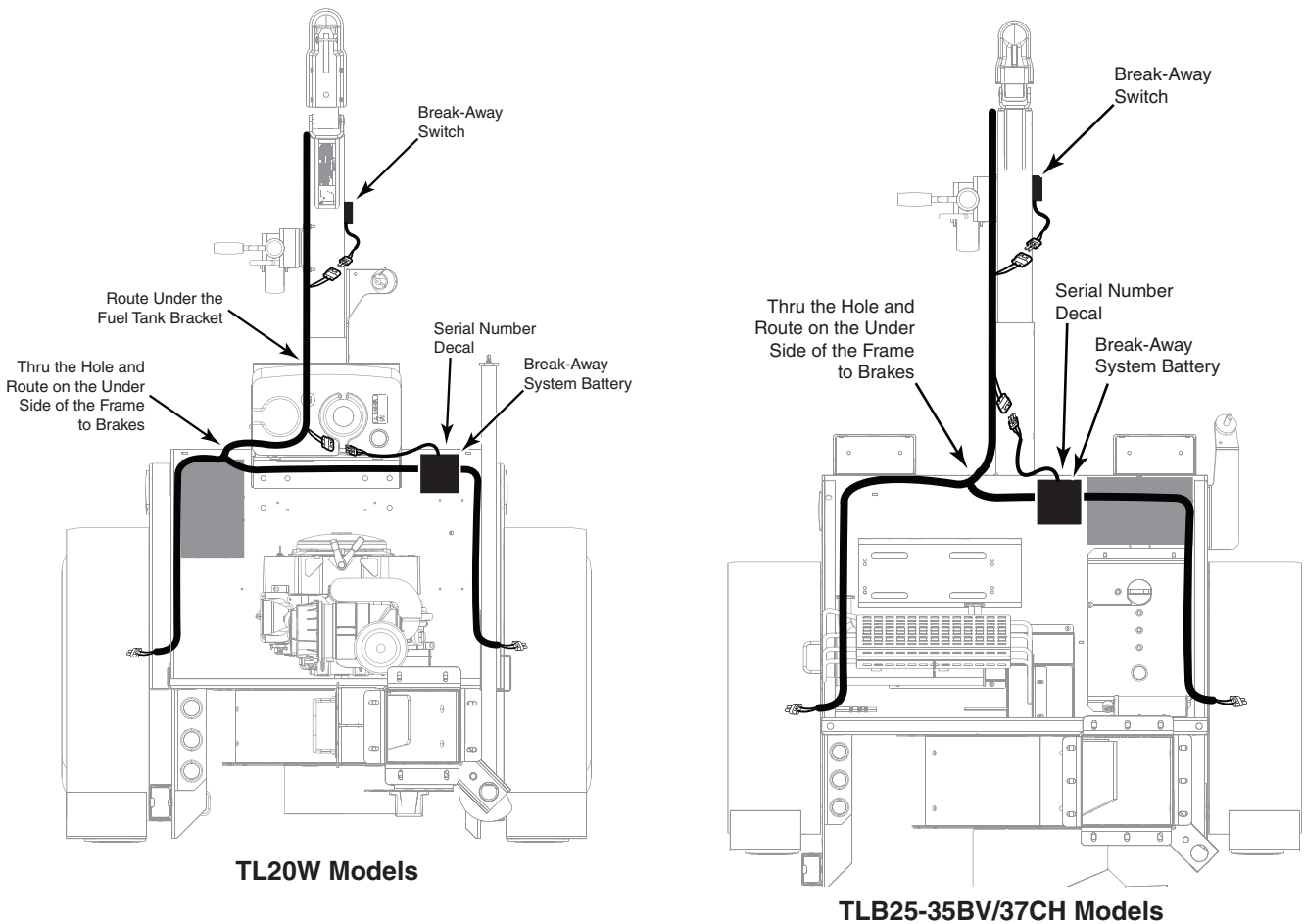


Figure 5. TL20W and TLB25-35BV/37CH Brake Kit Wire Harness Connection

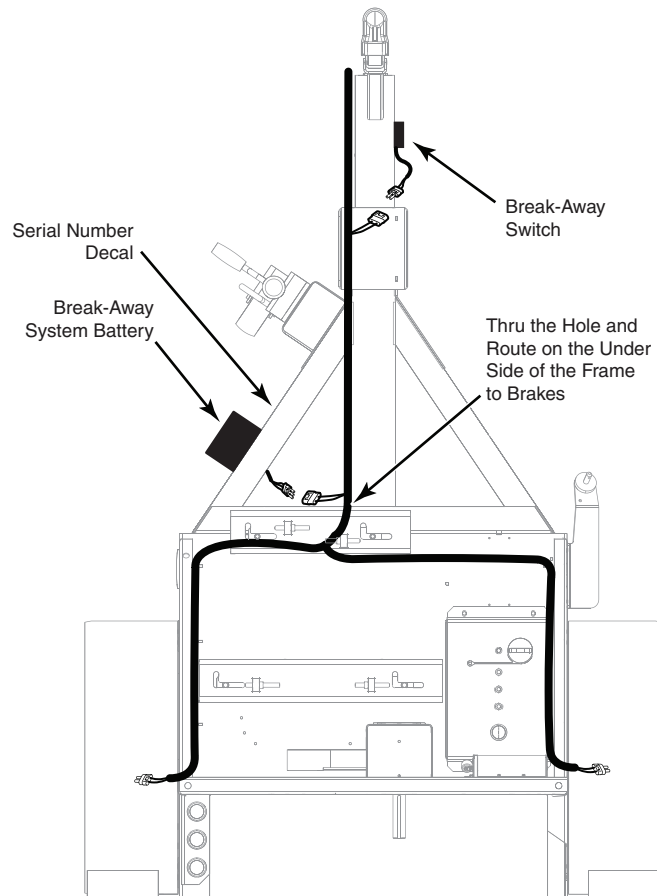


Figure 6. TLB25-48KBD & TLB25-49KBD Brake Kit Wire Harness Connection

19. Reinstall the wheels onto the truck loader.
20. Jack the truck loader up and remove the jack stands.